



# MTU EDGE Graduate Development

## 1 What is EDGE?

EDGE is a graduate development framework at MTU that recognises students' extra- and co-curricular activities and achievements. By engaging in EDGE, students can distinguish themselves, develop essential personal and professional skills, and significantly enhance their employability through Bronze, Silver, and Gold awards.



## 2 What are the 4 EDGE themes?

- **ENGAGE** with your world
- **DEVELOP** your future self
- **GROW** your innovative spirit
- **EXPLORE** your creativity & curiosity

## 3 What can EDGE do for me?

- Encourage you to get involved and engage with MTU during your time here.
- Keep track and pull together your activities at MTU in a meaningful way.
- Understand yourself better and develop your own personal and professional skills.
- Give you recognition and a sense of personal achievement.

## 4 How can I login to the EDGE platform?

- Go to [MyApps.microsoft.com](https://myapps.microsoft.com)
- Click the EDGE logo
- Click the Consent button the first time you login
- Login to the Potential.ly-EDGE page using your MTU network email address and password
- Bookmark the page for your next login or use the QR code below

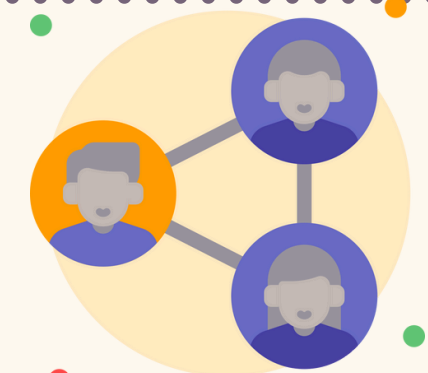


please Email us  
[edge@mtu.ie](mailto:edge@mtu.ie)



## 5 How do I get started with my Bronze award?

- Achieve your Bronze award by completing 7 short, interactive activities that help you Discover & Explore everything that MTU has to offer you.
- Start with the 3 essential activities
  - Student engagement
  - Your mental health & wellbeing and
  - Your Pi (personality indicator)
- Choose 4 more activities (1 for each EDGE theme)



## 6 How can I share my EDGE achievements?

Your EDGE progress and skills will be automatically added to your personal profile.

- Personalise your profile by adding a photo and a Bio.
- Add extra posts or projects to highlight your interests and talents.
- Share your profile directly to your LinkedIn or by copying the link.
- Make your profile private or public.
- Add your personal email when you leave to retain access to your folio.