



Your journey begins...

AnSEO

at MTU

AnSEO

The Student Engagement Office

Supporting Student Success



MTU

Ollscoil Teicneolaíochta na Mumhan
Munster Technological University

Yay!

You're here!

congratulations -

you have made it to Munster Technological University (MTU)! This is a big deal. Be proud of yourself. We're delighted you're here.

We have created this booklet to outline the academic year (as most students experience it) and to show you how AnSEO programmes will prove useful throughout the different stages*.

This booklet aims to give you a sense of the typical flow from first year to graduation. We urge you to bring your best self to the opportunity that awaits, remote or not. From first year to final year, the flow of each academic year is usually the same.

So, keep hold of this booklet and hang it as a poster on your wall to look back over whenever you need to.

If in doubt, find out! Ask questions and keep checking all your MTU communications.

There are lots of college terms used in this booklet that may be new to you. We have marked these out with a star* and described in the glossary at the back.



Introduction

Hello students

and a big welcome to Munster Technological University (MTU), from all of the team in AnSEO - The Student Engagement Office. Thank you for choosing to study with us at such an exciting time in our development and evolution as a technological university.

MTU is a great place to study. We have opportunities from undergraduate degrees at levels 7 and 8 to Masters degrees at level 9 and PhDs at level 10 across a wide range of disciplines. We have a well-earned reputation for academic and technical excellence, while also developing our graduates ready for employment, entrepreneurship and as effective citizens. We also have many opportunities for you to engage with extra-curricular activities, the Arts and sports, so please take advantage of this and soak it all up in so far as possible.

MTU is known for its commitment to you, our students, and we take this very seriously. We, in AnSEO - The Student Engagement Office, have developed and resourced several programmes which are outlined here. Our programmes are very clearly focused on enhancing your academic and professional development, from your induction into your course to progression through each year, to successful graduation. We look forward to working with you and we will be doing our best to ensure that your learning opportunities are as good as can be in the years ahead.

We are in this together, your opportunity to succeed is of paramount importance to us.

So let's get started!

The AnSEO Team

*Anseo is an Irish word meaning 'here' or 'present'. Engaged students are here, they turn up, whether virtually or face to face. Engaged students bring their best game and ask for help when they need it. Engaged students work with us to reach their potential and we are here to help. #AnSEO



AnSEO Team

AnSEO - The Student Engagement Office works with students and staff to create and facilitate programmes that encourage and develop students as they work towards progression and success in their courses of study.

As a team we extend our reach and impact by working together to listen, create a common purpose and build partnership programmes that are meaningful and have impact across MTU. We work with a wide range of staff and students across the University including faculty management, academic and professional staff, MTU's Students' Union and you, our great students. Our work in AnSEO has placed MTU as a leader in Student Engagement across the Higher Education sector. MTU is recognised by the Higher Education Authority as an exemplar and we have also won the Student Engagement and Communications Award at the Irish Education Awards in 2022, 2021, 2020, 2018 & 2017 and the COVID Response Award for our Reach Academic Mentoring programme in 2021.



MARESE BERMINGHAM

Head AnSEO - The Student Engagement Office, Head, Teaching and Learning Unit, Head, Arts Office
marese.bermingham@mtu.ie



ROISIN O'GRADY

Student Engagement Officer
roisin.ogrady@mtu.ie



CLIONA HATANO

Le Chéile Project Officer
cliona.hatano@mtu.ie



JOE MURPHY

Academic Success Coach
joe.murphy@mtu.ie



LOUISE MURPHY

Academic Success Coach
louiseh.murphy@mtu.ie



DR MARIAN HURLEY

Academic Success Coach
marian.hurley@mtu.ie



ALAN O'BRIEN

Communications & Events Officer
alan.obrien@mtu.ie



DEIRDRE CASEY

Academic Learning Centre Coordinator & Maths Positive Project Officer
maried.casey@mtu.ie



DR ANGELA MCGLYNN

Edge Project Officer
angela.mcglynn@mtu.ie



SANDRA POWER

Le Chéile & Transitions Project Officer
sandra.power@mtu.ie

We're looking forward to meeting you during your college journey!

AnSEO - The Student Engagement Office is part of the Office of the Registrar* and Vice President for Academic Affairs.

AnSEO Programmes

Good Start

<https://studentengagement.cit.ie/goodstart>

Good Start is an induction programme for first years on the MTU Cork campuses. It focuses on cultivating success, belonging, motivation, and independence to help new students find their way and settle into life at MTU during the first weeks of Semester 1 and Semester 2 of First Year. Good Start is co-created with a team of current MTU students known as the Good Start Ambassadors, who are recognisable to all MTU students and staff by their red hoodies and red Just Ask! T-shirts. In 22/23 Good Start will be stepping up its virtual presence. Keep your eyes and ears peeled...and help us to get #MTUGoodStart trending.

Academic Success Coaching

<https://studentengagement.cit.ie/asc>

You can interact with our coaches through four distinct offerings: one-to-one coaching sessions, coached study, coaching workshops, and an in-lecture coaching programme. Our coaches are experienced professionals who are trained in coaching methods. They use skills, tools, and resources to facilitate a conversation about where you are at and where you would like to get to. You decide what you want to bring to a session. Students talk about anything that influences their time at MTU and can plan forward based on the session conversation.

Transitions at MTU

<https://studentengagement.cit.ie/funding/transitions-to-mtu>

We want to support staff who want to support students! Every year, staff from Academic Departments are invited to apply for funding to develop projects that are focused on making the "transition" to and through MTU that little bit easier. Examples include team-building days, coffee mornings with staff & students or information resources for incoming students and often involve Good Start Ambassadors.

EDGE Award

<https://studentengagement.cit.ie/edge>

EDGE is an award to tie together the activities you are doing at University. It will help you stand out from the crowd as you Engage, Design, Generate and Explore your way through your MTU degree. There are bronze, silver and gold levels and you can progress at your own pace. Just sign up and find activities that suit you - there's something for everyone!

Academic Learning Centre

<https://studentengagement.cit.ie/alc>

The Academic Learning Centre helps students achieve their course goals wherever they are in their learning. It is a free drop-in and online centre for all students where subject lecturers are present during the timetabled hours to discuss varied queries on the subject topic and to answer your questions. The pass rates of students attending ALC sessions is high; over 89% across all the subject areas. Sessions are normally available in the following areas: Maths & Stats, Physics, Mechanics/ Thermofluids, Accounting, Economics, Computer Science, Chemistry, Academic Writing and Microsoft EXCEL. This year, the ALC has online booking...students love it...so check it out.

Le Chéile

<https://studentengagement.cit.ie/studentpartnership>

Le Chéile gives students and staff opportunities to talk about learning, teaching, assessments*, feedback, and all other aspects of studying at third level. We're passionate about hearing what students have to say, and about advocating for change based on that feedback. Look out for our surveys, feedback events or staff-student partnership projects where you can not only have your say but be part of developing ideas and solution to improve your experience. Le Chéile is supported and endorsed by MTU's Students' Union.

Navigate Learning Development

<https://studentengagement.cit.ie/navigate>

Navigate Learning Development equips you with the skills and know-how you need to succeed in your studies at MTU. We are here to support you in plotting your course through university. Some of the crucial skills we work on with students include effective presentations, groupwork, academic and technical writing, research skills, time and study management and assessment preparation. You can speak to us on a one-to-one basis by booking a free writing tutorial, or you may meet us in your lectures where we deliver workshops on skills for your specific course. Throughout the academic year, we also facilitate workshops on themes such as academic writing and presentation skills. Keep an eye on your student email for more information and to register!

Appendix

SEMESTER: The semester normally comprises a minimum of 17 weeks of academic activity, 13 weeks of teaching, learning, coursework and review, two weeks of student revision and assessment, and two weeks of examination processing.

A semester is worth 30 credits and typically consists of six modules. A taught programme will be based on two semesters per academic year.

LEARNING OUTCOMES: This is the list of what the student is expected to know, understand and be able to do after successfully completing a module.

MODULE: A module is similar to a subject with a series of learning outcomes. Each module has its own unique code and has a credit, e.g. 5 credits, 10 credits, 20 credits.

CREDIT: This is a value assigned to a module, e.g. 5 credits. Students must take a number of modules with associated credits to complete an academic year. E.g. 12 modules x 5 credits = 60 credits.

STAGE: Students progress through their courses in stages and each stage normally requires the student to accumulate 60 credits (usually in 1 academic year by a full-time student but this may not be true of part-time, access and other non-standard students). Each programme outlines how many credits are needed to complete each stage of the programme and will outline the range of modules to be taken in order to reach 60 credits and progress to the next stage.

ASSESSMENT: This is a range of methods used to evaluate if a student has achieved the learning outcomes* of the module they're studying. The methods vary and can be a written or oral exam, coursework, project work, a thesis, dissertation or another form such as a performance.

EXAM SCRIPT: This is the written work you've submitted in an exam.

INVIGILATOR: The person who supervises students during their exams and ensures exam regulations are met.

INDIVIDUAL EXTENUATING CIRCUMSTANCES (IEC): This describes conditions which temporarily prevent a student from taking an assessment(s) or significantly impair a student's performance in an assessment(s). For detailed guidelines and form, please visit <http://www.mycit.ie/extenuatingcircumstances>

REGISTRAR: Office responsible for maintaining student academic and enrolment records.

HEAD OF DEPARTMENT: Usually several courses in a similar learning area are grouped into a department. The Head of Department is the person responsible for managing the lecturing staff, course development and delivery, and financial resources in a department.



For More
Definitions

www.mycit.ie/glossary



Glossary of additional MTU Terms

CRN: This stands for Course Reference Number and is needed when registering for elective modules. www.mycit.ie/registering-for-electives

ELECTIVE MODULE: Students are given the opportunity to choose a module based on their interests or to explore other avenues of study. Most degree programmes will have elective modules at some or all stages of the programme.

PREREQUISITE: A module that must be taken prior to enrolment on another module.

PLAGIARISM: Copying of another's work and presenting it as your own.

TRANSCRIPTS: This document is a complete record of all programmes and modules taken by a student and grades they received at MTU.

WITHDRAWAL: This is where a student discontinues their programme of study. A grade of "W" is recorded on their transcript.

FT/PT: Full-time/Part-time.

This booklet was co-created by students and staff from AnSEO – The Student Engagement Office, working in partnership throughout this project, from start to finish.

Our team brought a diverse range of experience and backgrounds to the table where each of us had an equal voice. We hope you will find the contents of this booklet useful as you progress through MTU.

On behalf of Kate, Lisa, Louise, Cliona and Stephen – we wish you well and hope you enjoy your time as a student in MTU.





A good start is half the work



Good Start was developed with students to help new first years become familiar with their campus, settle in, meet people, get prepared for study, and find out who's here to support them along the way.

Starting university is a great opportunity to meet new people and make new friends. As well as using your own networking skills, AnSEO creates opportunities for you to link up with other people in different ways. To help get you started in making connections early in the semester, the Good Start Ambassadors run activities so that you get to know your classmates who will probably be alongside you for the next few years, so it's worth getting to know them.

Near the beginning of term, the Good Start Ambassadors might visit your class group to run a Get Connected

session. These ice-breaker activities give you another opportunity to get to know the names of your classmates and to find common interests.

You'll find Good Start Ambassadors (students wearing red hoodies) on the MTU Cork Campuses - or virtually on various social media platforms, through Canvas, @myCIT email and virtual help desks - at the beginning of the semester*. They are a friendly bunch, who love to help point students in the right direction, so don't be shy just say hi!

<https://studentengagement.cit.ie/goodstart/what>



Settling In

Sometimes it can be difficult to make friends in college, (and this year with social distancing and potentially some remote learning in the mix...well you can see the challenge), but there are many opportunities to find people with similar interests. Some students have told us how they got started:

"I made friends by joining a sports club"

"I introduced myself to the person sitting next to me in a lecture and found we had some things in common"

"Staying connected with classmates helped me greatly not just during the COVID-19 but even in my first semester"

Ciao

Hello

Salut

You may get the opportunity to take part in a Transitions at MTU event/initiative during your time at University. The idea behind our Transitions at MTU initiative is to support you and other students during important transition periods (e.g. entering third level or going on placement). When students are supported, they are in a better place to meet the challenge of that change.

These initiatives can include remote or in-person visits to industry workplaces, preparation sessions for work placements, a day out to an Adventure Centre, and other activities that your department has come up with to make your starting at and progression through MTU the best it can be.

<https://studentengagement.cit.ie/funding/transitions-at-mtu>





Where's your head at?

You have earned your place here in MTU and you can choose what mindset you approach college life with. Starting college, you have a clean slate - new place, new people and a new opportunity to be whoever you'd like to be.



Everything can be taken from us but one thing: the freedom to choose our attitude in any given set of circumstances

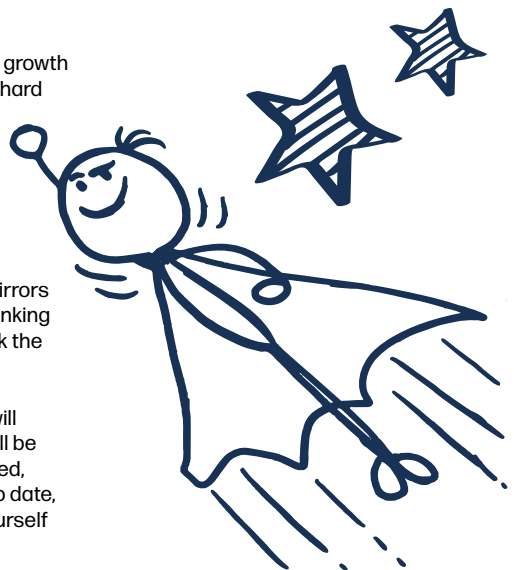
~ Viktor Frankl

Having a growth mindset can positively affect our experiences. With a growth mindset people believe that they can improve through dedication and hard work, which creates a resilience that is essential for success.

Consider, for a moment, the thoughts of someone who is:

Taking their driving test. If that person is feeling under confident and really believes they are going to take a wrong turn or not check their mirrors enough, it is likely to affect their driving. However, when the driver is thinking positively and is confident about their ability, they are more likely to tick the required boxes and pass their test.

The same is true of academic experience, a positive growth mindset will encourage us to enjoy the journey more and to make decisions that will be helpful to us (such as getting organised, making friends, getting involved, making connections). Remember all of the achievements you've had to date, you have plenty of experience of being successful so try not to sell yourself short.



Remember



AnSEO's Academic Success Coaches are available for you throughout the year to reflect on anything that is influencing your university experience. Many students use coaching to identify their strengths and blocks to establish a plan to accomplish their goals.

<https://studentengagement.cit.ie/asc/book>



Your university. Your life. Your coaching.



What week is it? What's happening?

Like other third level institutions, MTU has particular language that might take some time to get used to. For example, what we might have called 'subjects' before are called 'modules*' now and they all have a value (most are worth 5 credits* but there are some that are worth more). If you pass a module, you get awarded the credits for that module. You need to earn a certain amount of "credits" to progress to the next year of your studies.



Take a look at our glossary for further information on this.

The academic year is shorter than most people expect. It is split into two chunks called Semesters*

Classes typically run from September to the middle of December. The first week of term is called Week 1. It's important to keep track of what 'week' it is as lecturers will tell you the 'week' that assessments are taking place in or due.

NB



Once you have completed all your assessments (these can be made up of continuous assessment and end of semester exams) for the modules in Semester 1 you are finished with those modules and you'll start a whole new set of modules after the break. Semester 2 usually starts near the end of January and runs for another 17 weeks with the same format as Semester 1. There is a long stretch between the end of Semester 1 and the beginning of Semester 2.

The equivalent of 'Reading Week' in Semester 2 is the two-week Easter break.

Each Semester has a break during which the weeks are not numbered. 'Reading Week' is the break in Semester 1, there are no lectures this week however MTU is open, and it is an excellent opportunity to study, complete assignments and to recharge your batteries. It can be good to reflect on your learning to date and to prepare for what is ahead.

As well as keeping track of what's happening each week on your course, there are some important dates in Semester 1 and Semester 2 related to the payment of your fees, pausing your studies or in exceptional cases, changing your course. It's good to be informed of when these are so that you are aware of all your options.

A printed copy of the MTU Academic Calendar is free and available to all students at the beginning of the academic year, it is a very useful resource to have. You can also access the calendar online.



Navigate Learning Development equips you with the skills and know-how you need to succeed in your studies. Check out <https://studentengagement.cit.ie/navigate> to book a session.

<https://www.mtu.ie/news/mtu-academic-year-2022-2023>



5 Head scratchers

Got some questions you think you should know the answer to, and you don't really want to ask anyone?

When starting out in anything new, it can take a few weeks to adjust and get to know how things are done. College life is no different and it often takes new students a few weeks to adjust to new routines, modules, timetables, accommodation, ways of learning and of the culture at MTU. The Just Ask! series of pop-up desks, class visits and online communications will try to answer any questions you may have.

Just Ask! about MTU

is run by Good Start Ambassadors during the first four weeks of classes. Feel free to ask any questions you have. Sometimes they won't have the information to hand, but they will assist you to find the answer.



<https://studentengagement.cit.ie/goodstart/justask/faq>



Just Ask! About IT is run by IT Services to make sure you know how to log into your myCIT email, connect to the Wi-Fi, access Canvas (the online learning platform), learn how to use the printing facilities, and get you up and running on all the online systems in MTU.

Just Ask! About MTU Library is run by MTU Library to support you in learning the different ways the library can be used. The library staff are available to offer guidance on research, databases and referencing. Did you know that the library offers much more than just books... you can make use of e-books and e-journals, subject support guides, previous exam papers, referencing tools, study spaces and more.

Just Ask! About Exam Results is run by Good Start Ambassadors and the AnSEO office at the beginning of Semester 2 with information on how to access your exam results and what to do/who to speak to if you have any questions about your results.

The Academic Learning Centre runs free drop-in subject support sessions in Maths and Stats, Accounting, Economics, Mechanics and Thermofluids, Physics, Computing, Chemistry and Academic Writing. A bit like grinds, you can use this service to get a better understanding of a topic covered in class or answer a question about a particular module. You won't be put on the spot here or made to give answers in front of a group. This is a very supportive space for learning.

<https://studentengagement.cit.ie/alca>



6 Not convinced?

Some of us know from the moment we begin our courses that we are exactly where we are meant to be; some of us question whether we are on the right course or in the right college; and some of us are simply happy enough with our choices and to continue with our studies.

Questioning whether we are on the right course or in the right college can be common. It can happen at different times for different people, it can be to do with our course or the college environment or sometimes it can be due to other life stuff happening for us. It is good to question these feelings of uncertainty because when we look at the reality of the situation, we can make a better decision.

If you are questioning your decision it is important to talk to someone before deciding how to act on these feelings because leaving a course or college is a big decision.

Reasons for feeling unsure about staying can include lacking motivation, not being sure what career path the course leads to, not having a friendship group, failing some exams or feeling stressed. Often, talking these through with someone can highlight that there are many resources and people within MTU that can address these blocks (talk to a lecturer, an Academic Success Coach, a fellow student, a counsellor, a Careers Advisor or family member).

By talking with others, most students get further information, make changes to what they are doing and continue their course. Some students change courses, and some decide college isn't for them and leave. Whatever decision a student takes, MTU will support this process because the most important thing is that the student makes the best decision for them.

TALK
BEFORE
YOU
WALK



<https://studentengagement.cit.ie/droppingout>

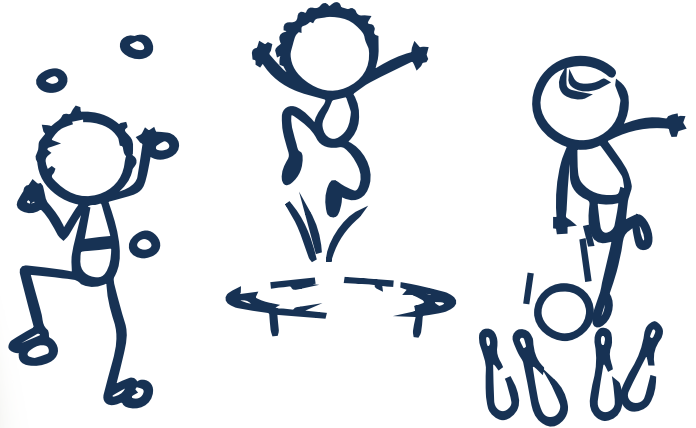




So much to do, and so much fun to be had!

Being a college student is a really exciting time in life and it can get really busy very quickly. Although this year might feel a bit different, please do not let this stop you. Lots of opportunities will be available but might require you to engage differently with them. Keep an open mind and keep moving forward.

It's important to stay focused on your primary role at MTU - being a student.



Successful students have a good college/life balance and incorporate activities that keep them well and happy into their time at MTU.

Why not start to make yourself stand out from the crowd by completing your bronze (and then perhaps your silver and gold) EDGE Award. Select from a range of activities and mark them off on your personalised EDGE dashboard to show future employers how you've made the most of all the opportunities University has to offer.



<https://studentengagement.cit.ie/edge>



Making a plan and sticking to it will ensure that you get to do what keeps you balanced. Our Academic Success Coaches share templates like these with students to get them started in planning their time well.

The most effective way of keeping on top of work is to stay engaged with learning material; lectures, notes, extra reading and any practice work given. Canvas is a particularly useful resource online which you will have access to, and often has a wealth of extra information related to your modules from your lecturers. Working together with other students from your class can be a very good way of keeping on top of your work while also supporting and motivating each other.

Whether face to face or remote, engaging with all of your lectures, labs and tutorials is the easiest way to learn and keep on top of what is going on academically and socially. Feedback from students and lecturers demonstrates again and again how important this is. Many students say they get annoyed when engagement with learning is low because they learn better and enjoy the college experience more when the whole class is involved and getting stuck in. Interestingly, staff say the same thing! Students say when they engage with timetabled teaching and learning activities, lectures labs etc., the amount of time they need for study is less and the study is easier because they have more of a grasp on the information. If you must miss some of the planned teaching, learning and /or assessment activities, we suggest you email your lecturer to let them know you can't attend.

Staying in contact with lecturing staff throughout your studies is important.

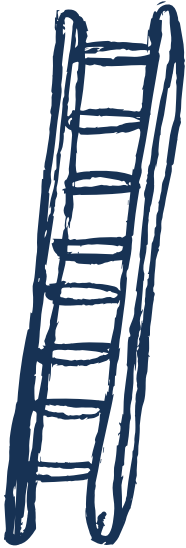
If you miss an assessment* because you are sick or because of other unexpected circumstances make sure to contact the relevant person such as your lecturer and your Class Coordinator or Head of Department* immediately. You may need to fill out an Individual Extenuating Circumstances (IEC)* form.

For detailed guidelines and the form visit www.mycit.ie/extenuatingcircumstances





Day by day, little by little



Starting out at University is a change for all of us (a different routine, concepts we have never heard of before, a new mix of people, continuous assessment* and group projects). We all respond uniquely to change. Some people get excited and motivated by new challenges while some become overwhelmed and shy away.

How motivated are you? We all know what it is like to experience that down day where you just don't want to do something, and you feel like you are fighting with yourself! Usually there is a reason motivation is low and a good way of addressing this can be by stimulating action.

Start by breaking things down into achievable chunks or tasks. This way of working can increase motivation and reduce overwhelm. Plan to start and finish on work you enjoy, this helps you get into 'the zone' initially, and it means you won't be dreading the last piece of work you need to do.

Having a conversation with an Academic Success Coach about motivation can be a good way to move forward so why not contact them today and arrange a quick follow up?



<https://studentengagement.cit.ie/asc>



Struggling with course content? If you're finding your coursework difficult to get to grips with, you're probably not the only one. It can sometimes seem like your friends and the people in other courses or colleges are having a different experience than you but it's impossible to really know what another person is experiencing. So, talk to your classmates, ask questions of/ talk to your lecturer if something doesn't make sense to you.

Whether you are a final year student or a first year student there is no time like the present to make a start on your learning. The pass rates of students attending Academic Learning Centre sessions is high; over 89% across all the subject areas, so it is well worth attending at least one hour a week. Here students work on their own academic problems with a lecturer interacting to help students out on an individual basis.

<https://studentengagement.cit.ie/alc>



It's important you use all the MTU resources available to you to help make the best of your experience, wherever you're at.

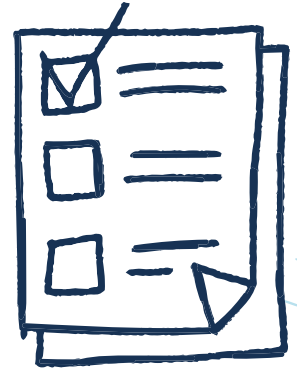


Deep breaths, let's talk about assessment!



Driving tests, fitness tests, any tests... does anyone really like being assessed? Assessments* are important in college because they give us a chance to show that we've been learning and what skills we've been developing throughout our course of study.

Let's face it - by doing assessments we are working towards our degrees and are guaranteeing the quality of our learning to future employers. Assessments can be motivational too, and are useful for showing us which areas of study we need to improve upon. So, we all must learn to live with assessment.



Assessment takes many forms in MTU and can be anything from individual project work, group work, essays, exhibitions, reports, presentations, performances or demonstrations to the more traditional end of semester* final exam depending what course you are studying.

Many MTU courses are evaluated through 'continuous assessment' which means that assigned work throughout the semester is graded and contributes towards your end of semester module* result. This takes pressure off because not everything hangs on one big exam rather several different smaller assessments. However, it does mean that we need to keep on top of work assigned and stay engaged in our studies throughout the semester.

Take a look at your module descriptor where you'll find more information on this and your lecturers will also keep you up to speed on any upcoming assessments.



Be part of the change!

Being a student at MTU is not just all about learning. We're keen to hear what you have to say about studying on your course, using MTU facilities and being part of the greater MTU community.

Le Chéile (pronounced Le Kay-La) is an Irish word meaning "together". It aims to empower students and staff to work together as equal partners, open to listening and learning from each other's perspectives and experiences through questionnaires, workshops or project teams.

Speaking up, using your voice, giving feedback and offering solutions makes change happen. Getting elected to be your class representative for the Students' Union is another way of becoming a change-maker. Remember - your feedback is very valuable to your department and the wider community at MTU. It helps us understand what we're doing well and how we can do better to meet your needs.

Le Chéile is supported and endorsed by the Students' Union.

<https://studentengagement.cit.ie/studentpartnership>



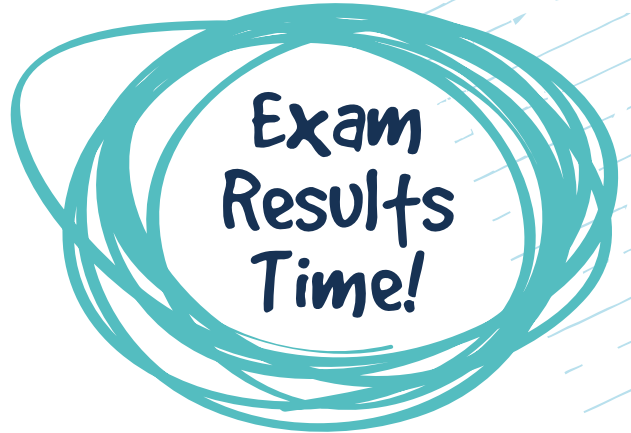
<https://www.mtu.ie/studying-at-mtu>





More deep breaths, let's talk about results!

Assessment and exam results are a great tool for self-evaluation, each of us knows exactly how much work we put into each piece of project work or exam. The results help us understand if it was enough, and in what areas we're good at or may need to focus on going forward, so lots of positives to look forward to!



The end of year results come out towards the end of June and your results can be accessed via an email from the Exams office. Just make sure your fee payment is up to date so that you can access your results.

<https://www.cit.ie/pay>

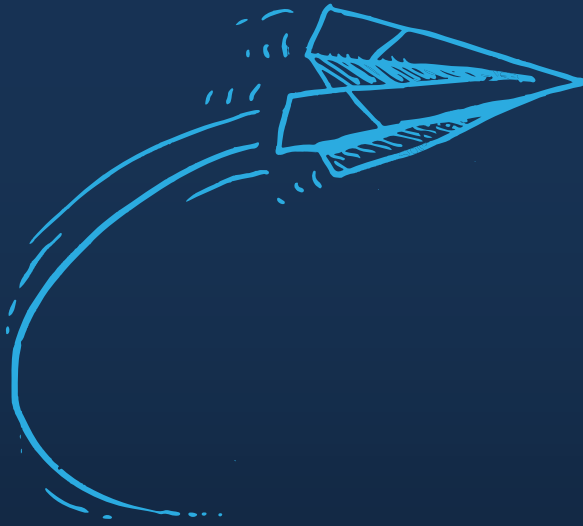


For some of us, the lead up to getting our results is no big deal, possibly even something we're curious and excited by, while for others it can be even more stressful than the exams themselves. Generally, most students are very successful and progress through their course in MTU.

If you hit a bump on the road and your results are not what you would like, take a deep breath! Talk to your Head of Department* to see what options you have. Some students like to view their exam scripts*, there are also options for students who would like to appeal their results or have an aspect of their assessment* re-checked as well as those who will need to repeat a module* or re-submit a piece of coursework.

AnSEO in conjunction with the Exams Office and the Registrar's Office* put together a handy FAQ guide for students around exam results time so look out for it in your emails. Academic Success Coaches along with the Students Union are also available to students who might have questions about their results.





MTU

Ollscoil Teicneolaíochta na Mumhan
Munster Technological University



Your university.
Your life. Your coaching.

